

# VAL-AN

## VAL-AN 900 SERIES

### VERSATILE RACKMOUNT AND INSTRUMENT CASES

- Shock mounted or hard mounted configurations.
- Choice of EMI shielded or environmentally-protected panels
- Front and rear access through removable covers.
- 7 basic styles, in panel heights from 5.25" to 17.50".
- 19" panel width, with standard EIA hole pattern.
- Waterproof construction.
- Meets applicable requirements of MIL-STD-108, MIL-STD-810, and MIL-PRF-28800.

This versatile line of rugged aluminum cases have been thoughtfully engineered to satisfy the growing need for rackmounted electronics in the field. They are ideal for the safe transportation and field operation of delicate electronic instruments, and offer a host of practical user benefits.

They feature an internal chassis, which is either hard mounted or shock mounted within the center section of the case. Installation or rack mounted equipment is quick and easy, with total accessibility from the front and rear. In transit or storage, instrument panels are thoroughly protected by covers which are latched to the case.

The cases are designed to be stacked, allowing users to set up a "cabinet" type system in the field. Specially designed T-type latches on the front cover permit accessibility to instruments and contents in the stacked mode; virtual impossibility in cases using traditional latch systems.

These cases feature recessed handles, waterproof construction with pressure relief valve, and optional EMI shielding or environmental protection.

They are available in 13 standard configurations, in panel heights from 5.25" to 17.50", and depths from 12.00" to 22.00". Front or rear covers may be optionally equipped with inner lids for storage.



Stacking Latch



Top: T-Latch  
Bottom: Scrow Latch



Grounding Strap  
Included in Every  
Cases with Frame



[www.zerocases.com](http://www.zerocases.com)  
Call 800-959-5050 or 801-298-5900

# VAL-AN 900 SERIES

## HOW TO CHOOSE A RACKMOUNT

# VAL-AN

MODEL	DESCRIPTION	HARD MOUNT	SHOCK MOUNT
900	Front Opening Case with Standard Spring-Loaded Latches.	v'	
905	Front Opening Case with 'R Handle Latches.	v'	
910	Double-Ended Opening Case with Standard Spring Latches.	v'	
915	Double-Ended Opening Case with 'T' Handle Latches on Front Cover & Standard Spring Latches on Rear Cover.	v'	
920	Front Opening Case with Standard Spring Latches on Cover. Available with Mil-T-28800 Optional Bumpers.	v'	
925	Front Opening Case with 'R Handle Latches on Cover. Available with Mil-T-28800 Optional Bumpers.	v'	
930	Double-Ended Opening Case with Standard Spring Latches on Covers. Options: Mil-T-28800 Bumpers & Sealed Panel.	v'	
935	Double-Ended Case with Standard Spring and 'R Handle Latches on Covers. Options: Mil-T-28800 Bumpers & Sealed Panel.	v'	
940	Front Opening Case with Standard Spring Latches on Cover.		v'
945	Front Opening Case with 'R Handle Latches on Cover.		v'
950	Double-Ended Opening Case with Standard Spring Latches on Covers. Options: EMI Shielded Rack.		v'
955	Double-Ended Opening Case with Standard Spring and 'T' Handle Latches on Covers. Options: EMI Shielded Rack.		v'
960	Double-Ended Opening Case with 'T' Handle & Screw Latches on Covers. Optional Stacking Latches Available.		v'

### STANDARD FINISH OPTIONS Finish, except latches, handle grip, hinges and valve.

#### POWDERCOAT PAINT

##### RECOMMENDED

BK—Black 27040  
 DB—Dark Blue 25102  
 DS—Desert Sand 20372  
 FG—Forest Green 24052  
 GR—Gray 26270  
 MB—Medium Blue 25190  
 NG—NATO Green RAL6014  
 OD—Olive Drab 24097  
 OR—Orange 21400  
 RD—Red 21105  
 WH—White 27925  
 YW—Yellow 23785  
 FED-STD-595 for reference.

#### RHINOLINING™

RB—Black  
 RG—Gray

#### MIL-SPEC FINISHES

A—No Finish.  
 B—Wash Prime per DOD-P-15328 and Epoxy Primer per MIL-PRF-23377, Type I, Class C2.  
 C—Same as B Plus Paint Light Gray Semi-Gloss Polyurethane Color #26307 of FED-STD-595.  
 D—Same as B Plus Paint Light Gray Semi-Gloss Polyurethane Color #16307 of FED-STD-595.  
 E—Wash Prime per DOD-P-15328 and Epoxy Primer per MIL-DTL-53022, Type II, Paint Polyurethane Yellow Gloss Color #13538 of FED-STD-595.  
 F—Same as B Plus Paint Strata Blue Gloss Polyurethane Color #15045 of FED-STD-595.  
 G—Same as B Plus Paint Green Semi-Gloss Polyurethane Color #24300 of FED-STD-595.

H—Same as B Plus Paint Olive Drab Semi-Gloss Polyurethane Color #24084 of FED-STD-595.

J—Same as B Plus Paint Olive Drab Lusterless Polyurethane Color #34088 of FED-STD-595.

K—Same as B Plus Paint Aliphatic Polyurethane Camouflage Coating (CARC) per MIL-DTL-53039, Type II, Color #383 Green, #34094 of FED-STD-595.

S—Special Order—Please Specify.

W—Chemical Film Per MIL-DTL-5541, Type I, Class 1A. Epoxy Primer per MIL-DTL-53022, Type II, or Water-base Epoxy Primer per MIL-DTL-53030, Type I. Paint with White Polyurethane Coating per MIL-PRF-85285, Type II, Class H, Color #17925 of FED-STD-595 or Epoxy Coating Per MIL-PRF-22750.

UA—Chem Film per MIL-DTL-5541, Type I, Class 1A.

### CUSTOMIZATION

Any commercial or military specification can be met. ZERO can supply any color per FED-STD-595.

#### Panel Fabrication

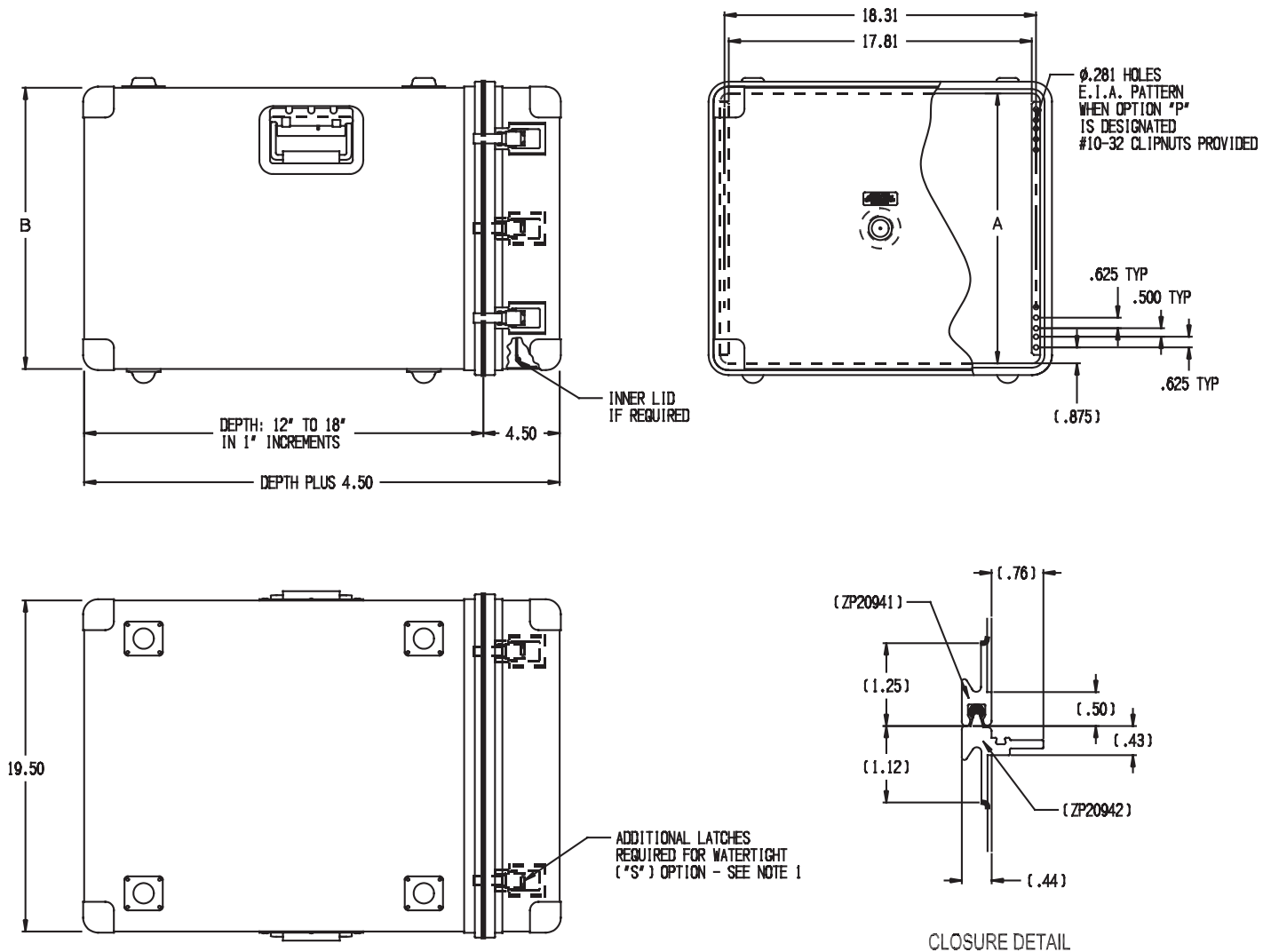
- Silk Screen
- Engraving
- Custom Fabrication

#### Case Customization

- Stenciling
- Designation Printing
- Decals/Labels
- Silk Screen



# VAL-AN 900 Series - Model 900



## PART NUMBER

900 ☐ ☐ ☐ ☐ ☐ ☐ ☐ ☐

1 = NON-RECESSED HANDLE  
2 = RECESSED HANDLE

A = AUTOMATIC VALVE  
M = MANUAL RELIEF VALVE  
N = NOT REQUIRED

4 = NOT REQ'D  
5 = INNER LID FOR COVER

FINISH (see page 46)

DEPTH: IN 1" INCREMENTS  
12" MIN TO 18" MAX

C = CUSTOMER  
P = STANDARD (E.I.A.)  
N = NOT REQ'D

PANEL HEIGHT

D = DRIP PROOF PER MIL-STD-108  
S = WATERTIGHT PER MIL-STD-108

CASE SERIES

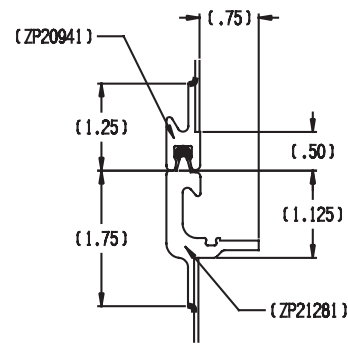
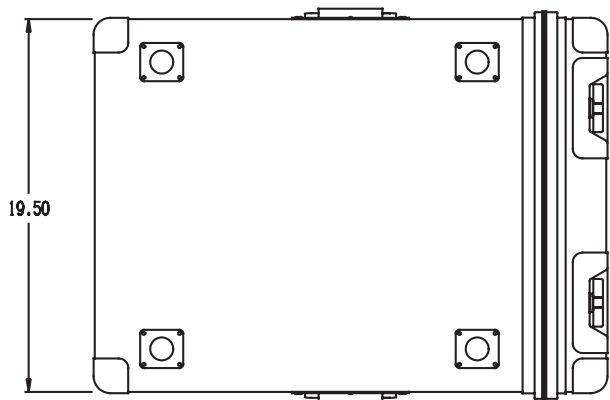
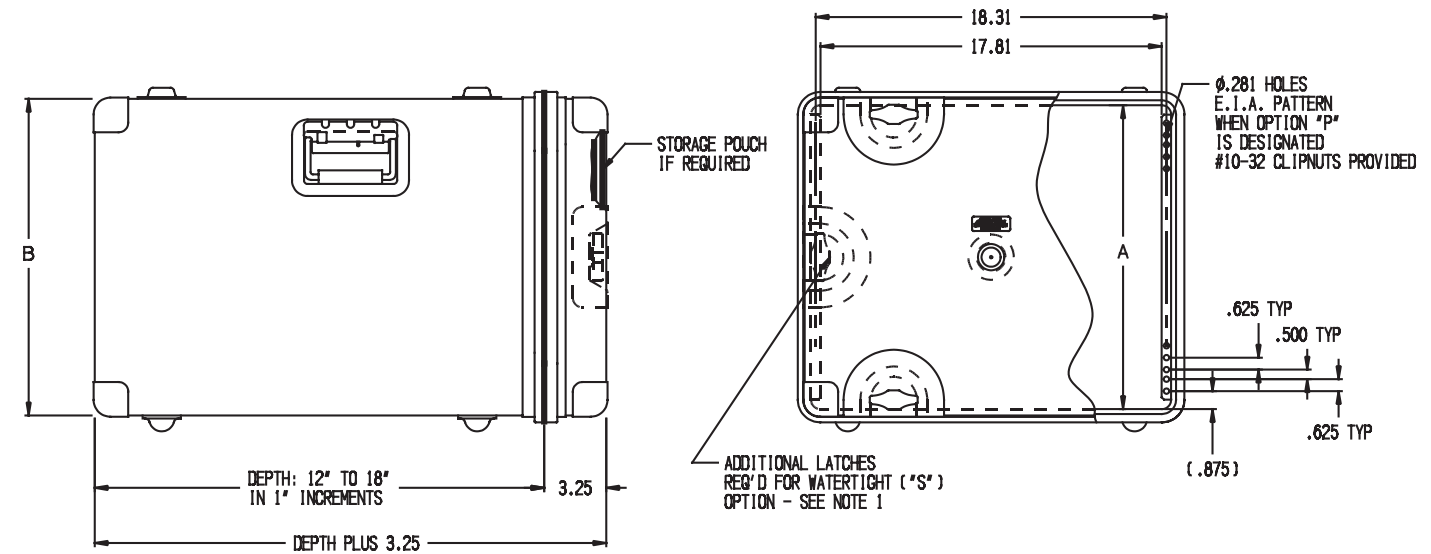
## PANEL HEIGHT

Dash No.	"A" Dim.	"U" Size	"B" Dim.
X	Special Size		
-5	5.25	(3U)	6.12
-7	7.00	(4U)	7.87
-8	8.75	(5U)	9.62
-10	10.50	(6U)	11.37
-14	14.00	(8U)	14.87
-17	17.50	(10U)	18.37
-21	21.00	(12U)	21.87
-24	24.50	(14U)	25.37
-28	28.00	(16U)	28.87

## NOTES:

1. ADDITIONAL LATCHES REQUIRED FOR WATERTIGHT ("S") OPTION.  
PANEL HEIGHT DASH NO. 5 THRU 7 ADD: 4 LATCHES (8 TOTAL)  
PANEL HEIGHT DASH NO. 8 THRU 17 ADD: 4 LATCHES (8 TOTAL)  
PANEL HEIGHT DASH NO. 21 THRU 28 ADD: 6 LATCHES (10 TOTAL)

# VAL-AN 900 Series - Model 905



CLOSURE DETAIL

## PART NUMBER

905 ☐ ☐ ☐ ☐ ☐ ☐ ☐ ☐

1 = NON-RECESSED HANDLE  
2 = RECESSED HANDLE

A = AUTOMATIC VALVE  
M = MANUAL RELIEF VALVE  
N = NOT REQUIRED

4 = NOT REQ'D  
6 = POUCH

FINISH (see page 46)

DEPTH: IN 1" INCREMENTS  
12" MIN TO 18" MAX

C = CUSTOMER  
P = STANDARD (E.I.A.)  
N = NOT REQ'D

PANEL HEIGHT

D = DRIP PROOF PER MIL-STD-108  
S = WATERTIGHT PER MIL-STD-108

CASE SERIES

## PANEL HEIGHT

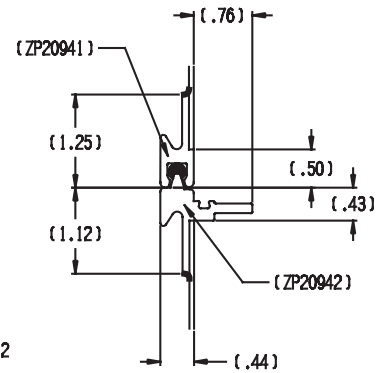
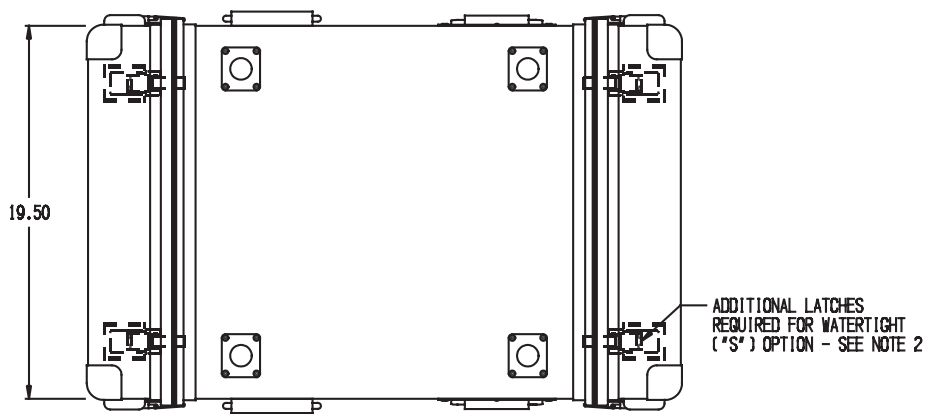
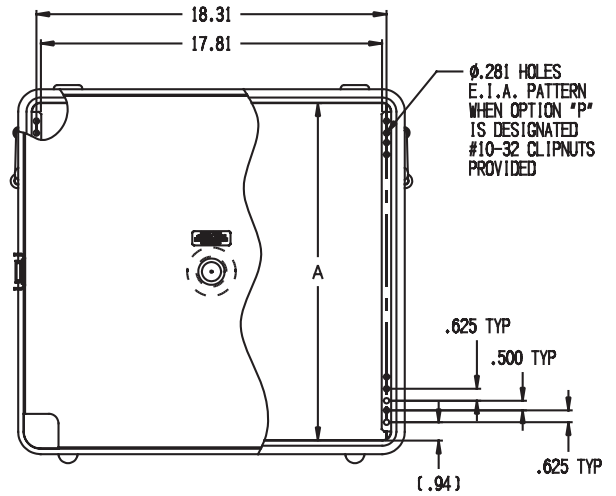
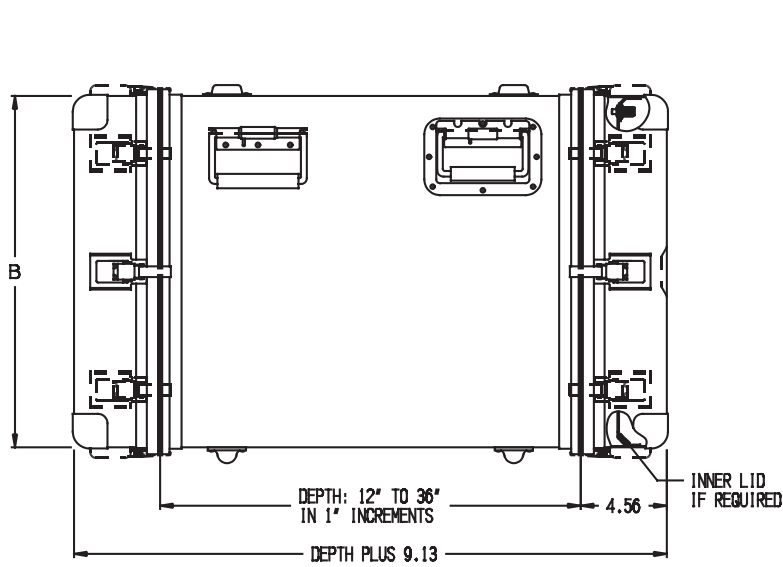
Dash No.	"A" Dim.	"U" Size	"B" Dim.
X	Special Size		
-7	7.00	(4U)	7.87
-8	8.75	(5U)	9.62
-10	10.50	(6U)	11.37
-14	14.00	(8U)	14.87
-17	17.50	(10U)	18.37
-21	21.00	(12U)	21.87
-24	24.50	(14U)	25.37
-28	28.00	(16U)	28.87

## NOTES:

1. ADDITIONAL LATCHES REQUIRED FOR WATERTIGHT ("S") OPTION.  
PANEL HEIGHT DASH NO. 14 THRU 28 ADD: 2 LATCHES (6 TOTAL)



# VAL-AN 900 Series - Model 910



CLOSURE DETAIL

## PART NUMBER

910 ☐ ☐ ☐ ☐ ☐ ☐ ☐ ☐

1 = NON-RECESSED HANDLE  
2 = RECESSED HANDLE

A = AUTOMATIC VALVE  
M = MANUAL RELIEF VALVE  
N = NOT REQUIRED

4 = NOT REQ'D  
5 = INNER LID FRONT COVER  
6 = INNER LID REAR COVER  
7 = INNER LID BOTH COVERS

FINISH (see page 46)

DEPTH: IN 1" INCREMENTS  
12" MIN TO 36" MAX

C = CUSTOMER  
P = STANDARD (E.I.A.)  
N = NOT REQ'D

PANEL HEIGHT

D = DRIP PROOF PER MIL-STD-108  
S = WATERTIGHT PER MIL-STD-108

CASE SERIES

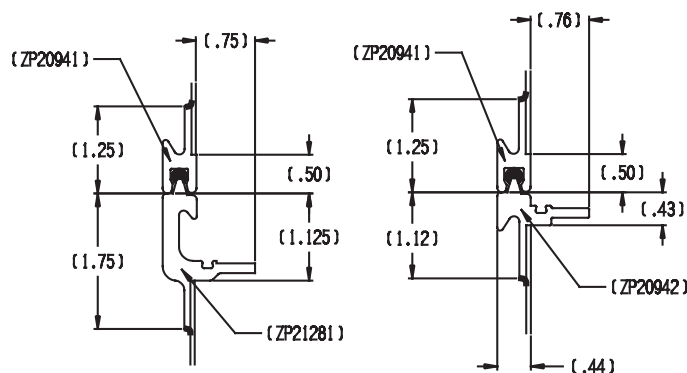
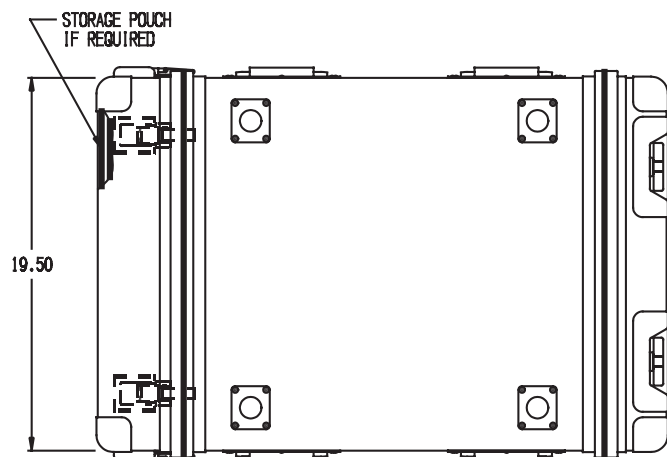
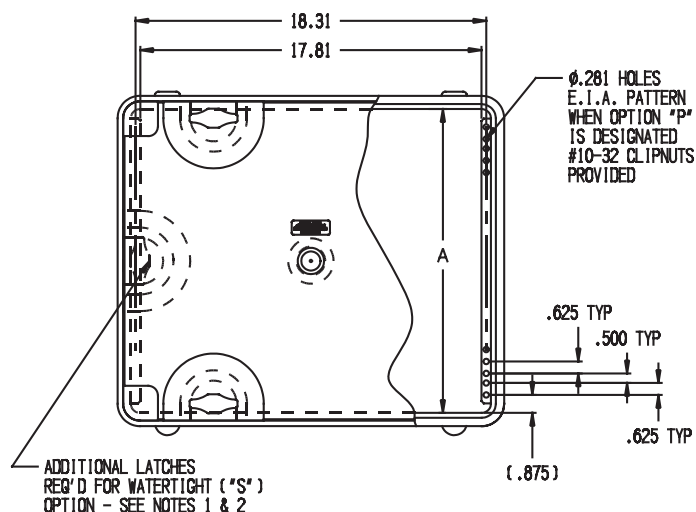
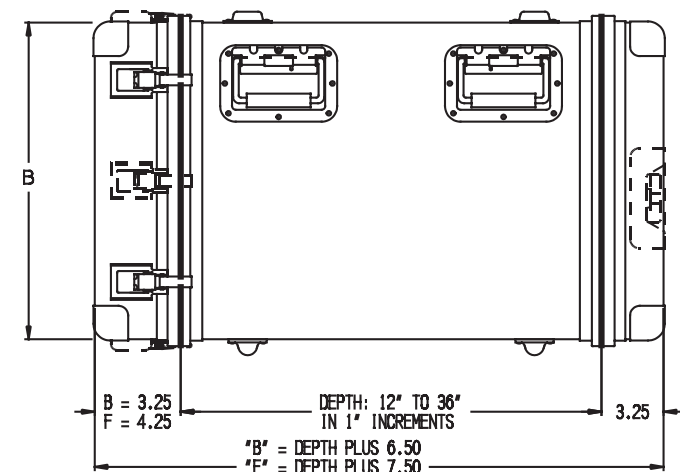
PANEL HEIGHT			
Dash No.	"A" Dim.	"U" Size	"B" Dim.
X	Special Size		
-5	5.25	(3U)	6.12
-7	7.00	(4U)	7.87
-8	8.75	(5U)	9.62
-10	10.50	(6U)	11.37
-14	14.00	(8U)	14.87
-17	17.50	(10U)	18.37
-21	21.00	(12U)	21.87
-24	24.50	(14U)	25.37
-28	28.00	(16U)	28.87

## NOTES:

1. HANDLES:  
2 REQUIRED FOR DEPTHS OF 12 TO 18 INCHES.  
4 REQUIRED FOR DEPTHS OF 19 TO 36 INCHES.

2. ADDITIONAL LATCHES REQUIRED FOR WATERTIGHT ('S') OPTION.  
PANEL HEIGHT DASH NO. 5 THRU 8 ADD: 8 LATCHES (12 TOTAL)  
PANEL HEIGHT DASH NO. 10 THRU 17 ADD: 8 LATCHES (16 TOTAL)  
PANEL HEIGHT DASH NO. 21 THRU 28 ADD: 8 LATCHES (20 TOTAL)

# VAL-AN 900 Series - Model 915



CLOSURE DETAIL  
("T" LATCH)

CLOSURE DETAIL  
(SPRING LATCH)

PART NUMBER

915

B = BOTH COVERS "T" LATCH  
F = RECESSED "T" LATCH  
(SPRING LATCH REAR COVER)

1 = NON-RECESSED HANDLE  
2 = RECESSED HANDLE

A = AUTOMATIC VALVE  
M = MANUAL RELIEF VALVE  
N = NOT REQUIRED

4 = NOT REQ'D  
6 = POUCH (REAR COVER ONLY)

FINISH (see page 46)

DEPTH: IN 1" INCREMENTS  
12" MIN TO 36" MAX

C = CUSTOMER  
P = STANDARD (E.I.A.)  
N = NOT REQ'D

PANEL HEIGHT

D = DRIP PROOF PER MIL-STD-108  
S = WATERTIGHT PER MIL-STD-108

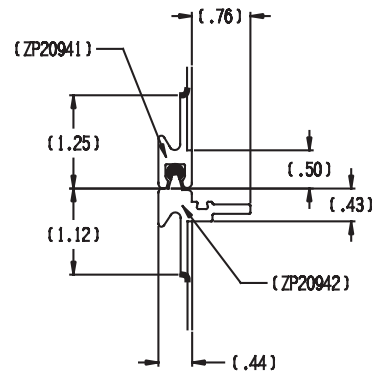
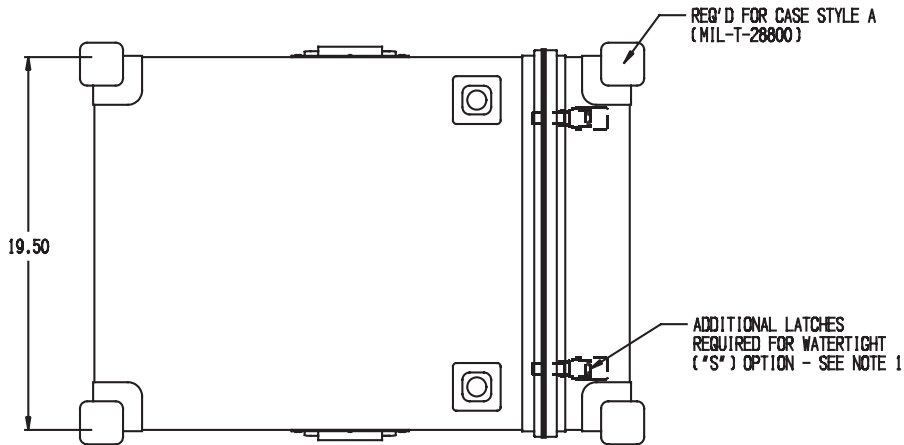
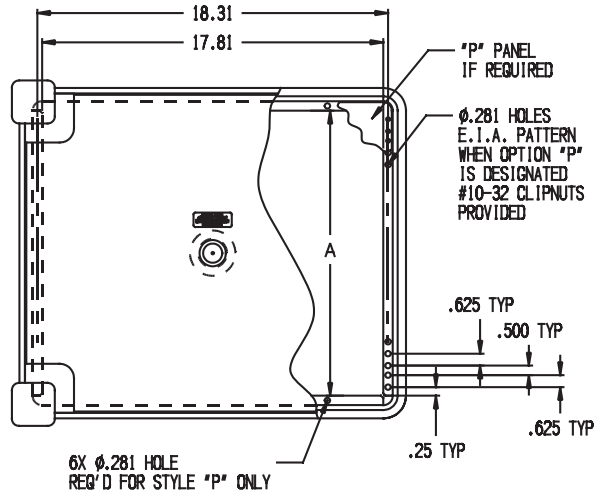
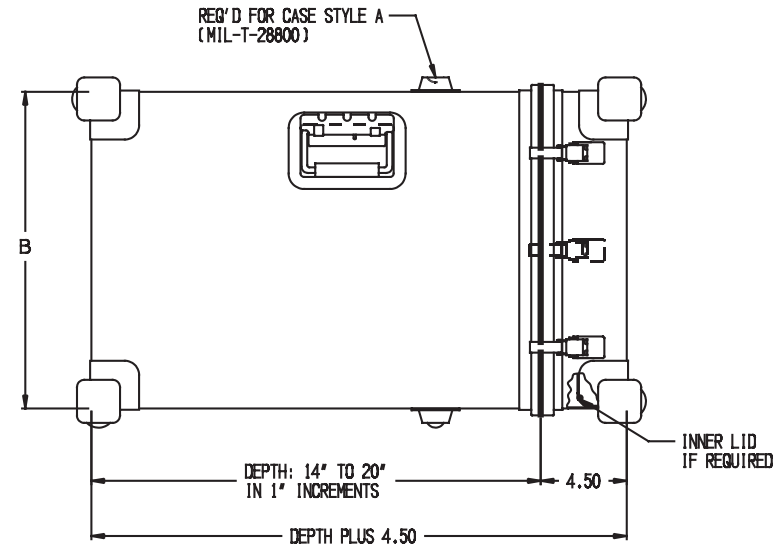
CASE SERIES

PANEL HEIGHT			
Dash No.	"A" Dim.	"U" Size	"B" Dim.
X	Special Size		
-7	7.00	(4U)	7.87
-8	8.75	(5U)	9.62
-10	10.50	(6U)	11.37
-14	14.00	(8U)	14.87
-17	17.50	(10U)	18.37
-21	21.00	(12U)	21.87
-24	24.50	(14U)	25.37
-28	28.00	(16U)	28.87

NOTES:

1. ADDITIONAL SPRING LATCHES REQUIRED FOR WATERTIGHT ("S") OPTION.  
PANEL HEIGHT DASH NO. 5 THRU 8 ADD: 4 LATCHES (8 TOTAL)  
PANEL HEIGHT DASH NO. 10 THRU 17 ADD: 4 LATCHES (8 TOTAL)  
PANEL HEIGHT DASH NO. 21 THRU 28 ADD: 6 LATCHES (10 TOTAL)
2. ADDITIONAL "T" LATCHES REQUIRED FOR WATERTIGHT ("S") OPTION.  
PANEL HEIGHT DASH NO. 14 THRU 28 ADD: 2 LATCHES (6 TOTAL)

# VAL-AN 900 Series - Model 920



### CLOSURE DETAIL

## PART NUMBER

920    ☐    ☐    ☐    ☐    ☐    ☐    ☐    ☐    ☐    ☐ —

P = WITH PANEL (REQ'D FOR MIL-T-28800)  
N = WITHOUT PANEL

1 = NON-RECESSED HANDLE  
2 = RECESSED HANDLE

A = AUTOMATIC VALVE  
M = MANUAL RELIEF VALVE  
N = NOT REQUIRED

4 = NOT REQ'D  
5 = INNER LID FOR COVER

FINISH (see page 46)

DEPTH: IN 1" INCREMENTS  
14" MIN TO 20" MAX

C = CUSTOMER  
P = STANDARD (E.I.A.)  
N = NOT REQ'D

PANEL HEIGHT

D = DRIP PROOF PER MIL-STD-108  
S = WATERTIGHT PER MIL-STD-108  
A = MIL-T-28800, STYLE A

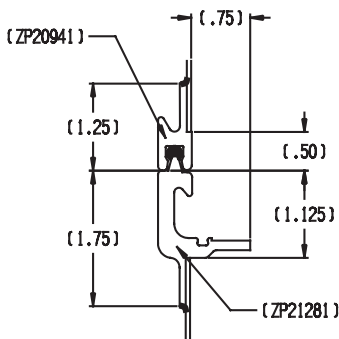
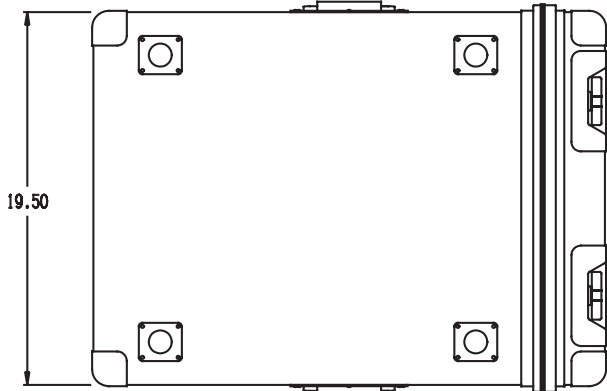
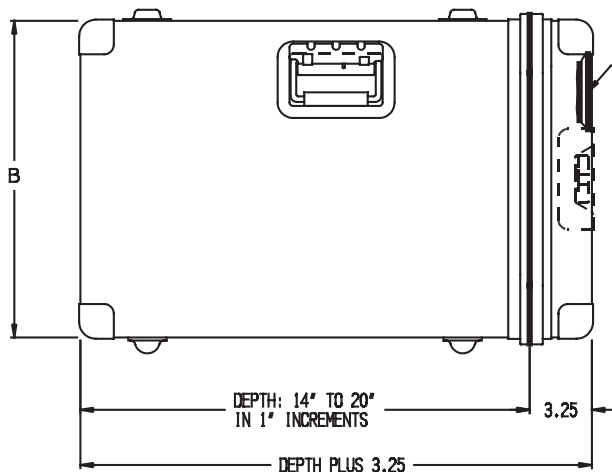
CASE SERIES

PANEL HEIGHT			
Dash No.	"A" Dim.	"U" Size	"B" Dim.
X	Special Size		
-5	5.25	(3U)	6.94
-7	7.00	(4U)	8.69
-8	8.75	(5U)	10.44
-10	10.50	(6U)	12.19
-14	14.00	(8U)	15.69
-17	17.50	(10U)	19.19
-21	21.00	(12U)	22.69
-24	24.50	(14U)	26.19
-28	28.00	(16U)	29.69

NOTES:

1. ADDITIONAL LATCHES REQUIRED FOR WATERTIGHT ("S") OPTION.  
 PANEL HEIGHT DASH NO. 5 ADD: 4 LATCHES (6 TOTAL)  
 PANEL HEIGHT DASH NO. 7 THRU 17 ADD: 4 LATCHES (8 TOTAL)  
 PANEL HEIGHT DASH NO. 21 THRU 28 ADD: 6 LATCHES (10 TOTAL)

# VAL-AN 900 Series - Model 925



### CLOSURE DETAIL

PART NUMBER

925 □ □ □ □ □ □ □ □ □ —

P = WITH PANEL  
N = WITHOUT PANEL

1 = NON-RECESSED HANDLE  
2 = RECESSED HANDLE

A = AUTOMATIC VALVE  
M = MANUAL RELIEF VALVE  
N = NOT REQUIRED

4 = NOT REQ'D  
5 = INNER LID FOR COVER

FINISH (see page 46)

DEPTH: IN 1" INCREMENTS  
14" MIN TO 20" MAX

C = CUSTOMER  
P = STANDARD (E.I.A.)  
N = NOT REQ'D

PANEL HEIGHT

D = DRIP PROOF PER MIL-STD-108  
S = WATERTIGHT PER MIL-STD-108

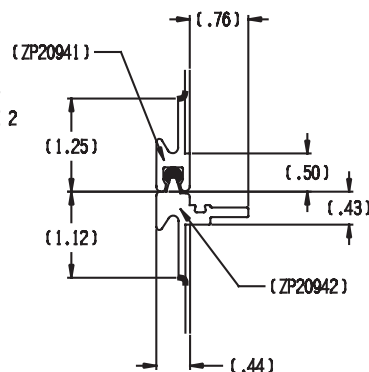
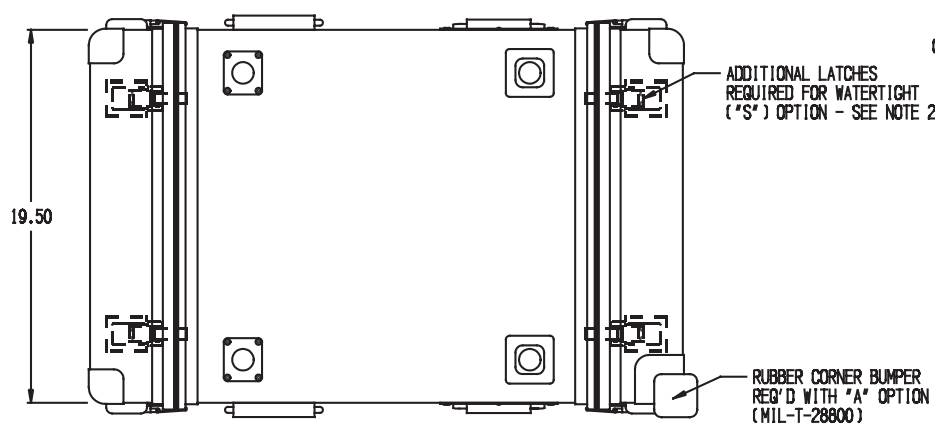
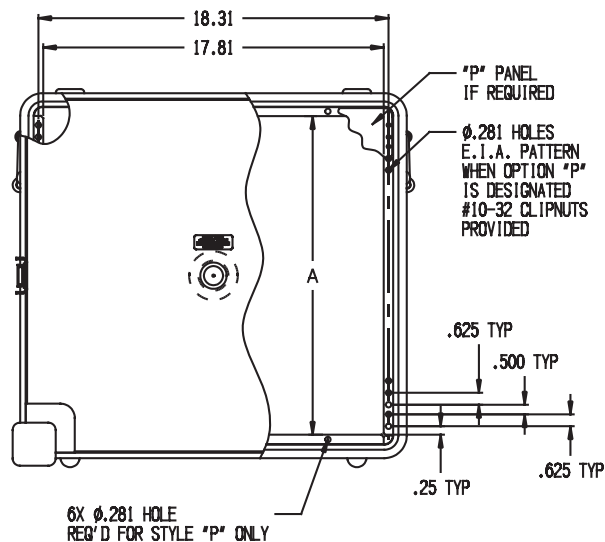
## CASE SERIES

PANEL HEIGHT			
Dash No.	"A" Dim.	"U" Size	"B" Dim.
X	Special Size		
-5	Not Available - See 920 Series		
-7	7.00	(4U)	8.69
-8	8.75	(5U)	10.44
-10	10.50	(6U)	12.19
-14	14.00	(8U)	15.69
-17	17.50	(10U)	19.19
-21	21.00	(12U)	22.69
-24	24.50	(14U)	26.19
-28	28.00	(16U)	29.69

NOTES:

1. ADDITIONAL LATCHES REQUIRED FOR WATERTIGHT ("S") OPTION.  
PANEL HEIGHT DASH NO. 7 THRU 17 ADD: 4 LATCHES (8 TOTAL)  
PANEL HEIGHT DASH NO. 21 THRU 28 ADD: 6 LATCHES (10 TOTAL)

REQ'D FOR CASE STYLE A  
(MIL-T-28800)



PART NUMBER

930 □ □ □ □ □ □ □ —

P = WITH PANEL (REQ'D FOR MIL-T-28800)  
N = WITHOUT PANEL

1 = NON-RECESSED HANDLE  
2 = RECESSED HANDLE

A = AUTOMATIC VALVE  
M = MANUAL RELIEF VALVE  
N = NOT REQUIRED

4 = NOT REQ'D  
5 = INNER LID FRONT COVER  
6 = INNER LID REAR COVER  
7 = INNER LID BOTH COVERS

FINISH (see page 46)

DEPTH: IN 1" INCREMENTS  
12" MIN TO 36" MAX

C = CUSTOMER  
P = STANDARD (E.I.A.)  
N = NOT REQ'D

PANEL HEIGHT

D = DRIP PROOF PER MIL-STD-108  
S = WATERTIGHT PER MIL-STD-108  
A = MIL-T-28800, STYLE A

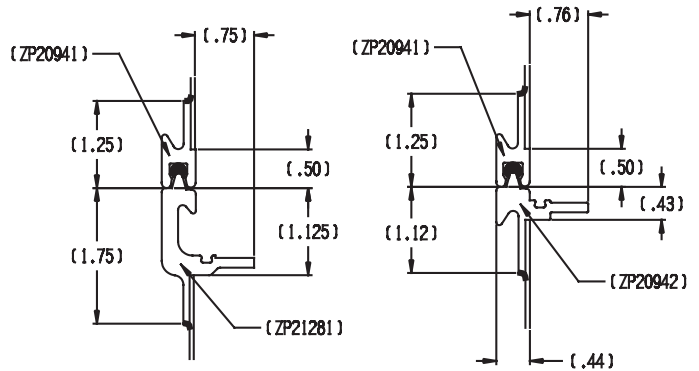
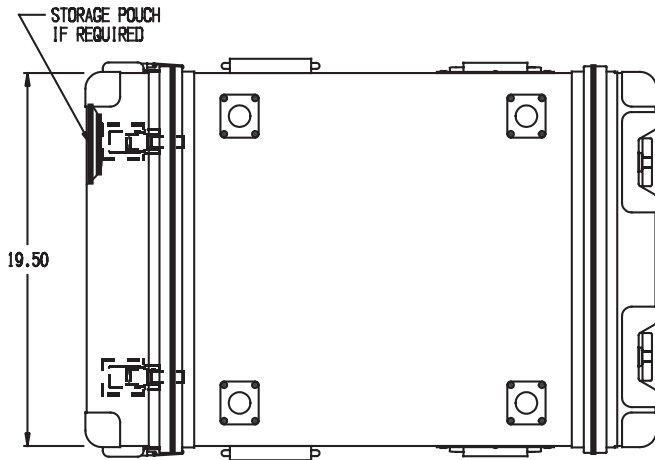
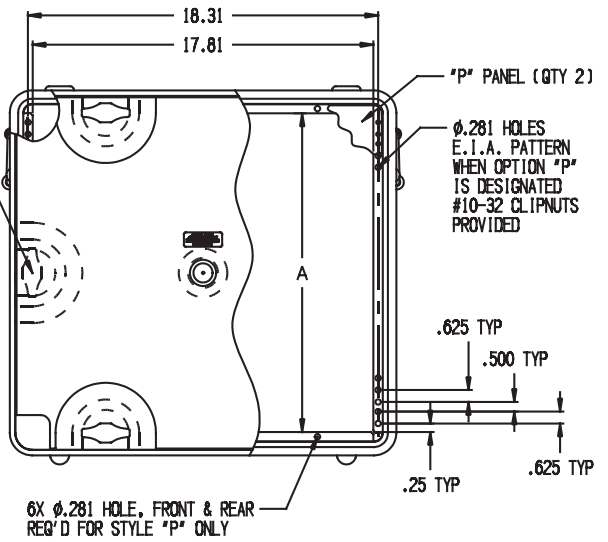
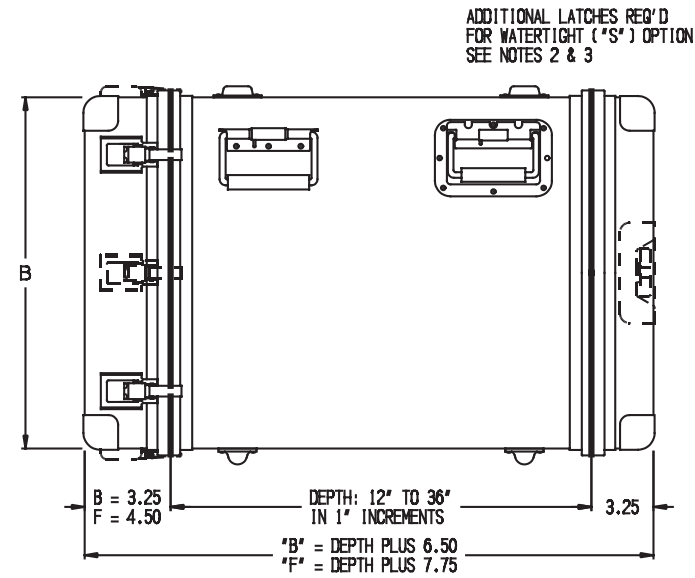
CASE SERIES

PANEL HEIGHT			
Dash No.	"A" Dim.	"U" Size	"B" Dim.
X	Special Size		
-5	5.25	(3U)	6.94
-7	7.00	(4U)	8.69
-8	8.75	(5U)	10.44
-10	10.50	(6U)	12.19
-14	14.00	(8U)	15.69
-17	17.50	(10U)	19.19
-21	21.00	(12U)	22.69
-24	24.50	(14U)	26.19
-28	28.00	(16U)	29.69

1. HANDLES:  
2 REQUIRED FOR DEPTHS OF 12 TO 18 INCHES.  
4 REQUIRED FOR DEPTHS OF 19 TO 36 INCHES.

2. ADDITIONAL LATCHES REQUIRED FOR WATERTIGHT ("S") OPTION.  
PANEL HEIGHT DASH NO. 5 ADD: 4 LATCHES (6 TOTAL)  
PANEL HEIGHT DASH NO. 7 THRU 17 ADD: 4 LATCHES (6 TOTAL)  
PANEL HEIGHT DASH NO. 21 THRU 28 ADD: 6 LATCHES (10 TOTAL)

# VAL-AN 900 Series - Model 935

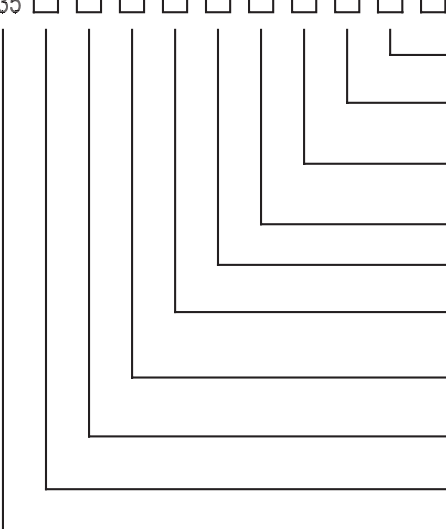


CLOSURE DETAIL  
("T" LATCH)

CLOSURE DETAIL  
(SPRING LATCH)

## PART NUMBER

935



P = WITH PANEL (MIL-T-28800, C)  
N = WITHOUT PANEL  
B = BOTH COVERS "T" LATCH  
F = RECESSED "T" LATCH (REAR SPRING)  
1 = NON-RECESSED HANDLE  
2 = RECESSED HANDLE (MIL-T-28800, C)  
A = AUTOMATIC VALVE  
M = MANUAL RELIEF VALVE  
N = NOT REQUIRED  
4 = NOT REQ'D  
6 = POUCH (REAR COVER ONLY)  
FINISH (see page 46)  
DEPTH: IN 1" INCREMENTS  
12" MIN TO 36" MAX  
C = CUSTOMER  
P = STANDARD (E.I.A.)  
N = NOT REQ'D  
PANEL HEIGHT  
D = DRIP PROOF PER MIL-STD-108  
S = WATERTIGHT PER MIL-STD-108  
A = MIL-T-28800, STYLE C  
CASE SERIES

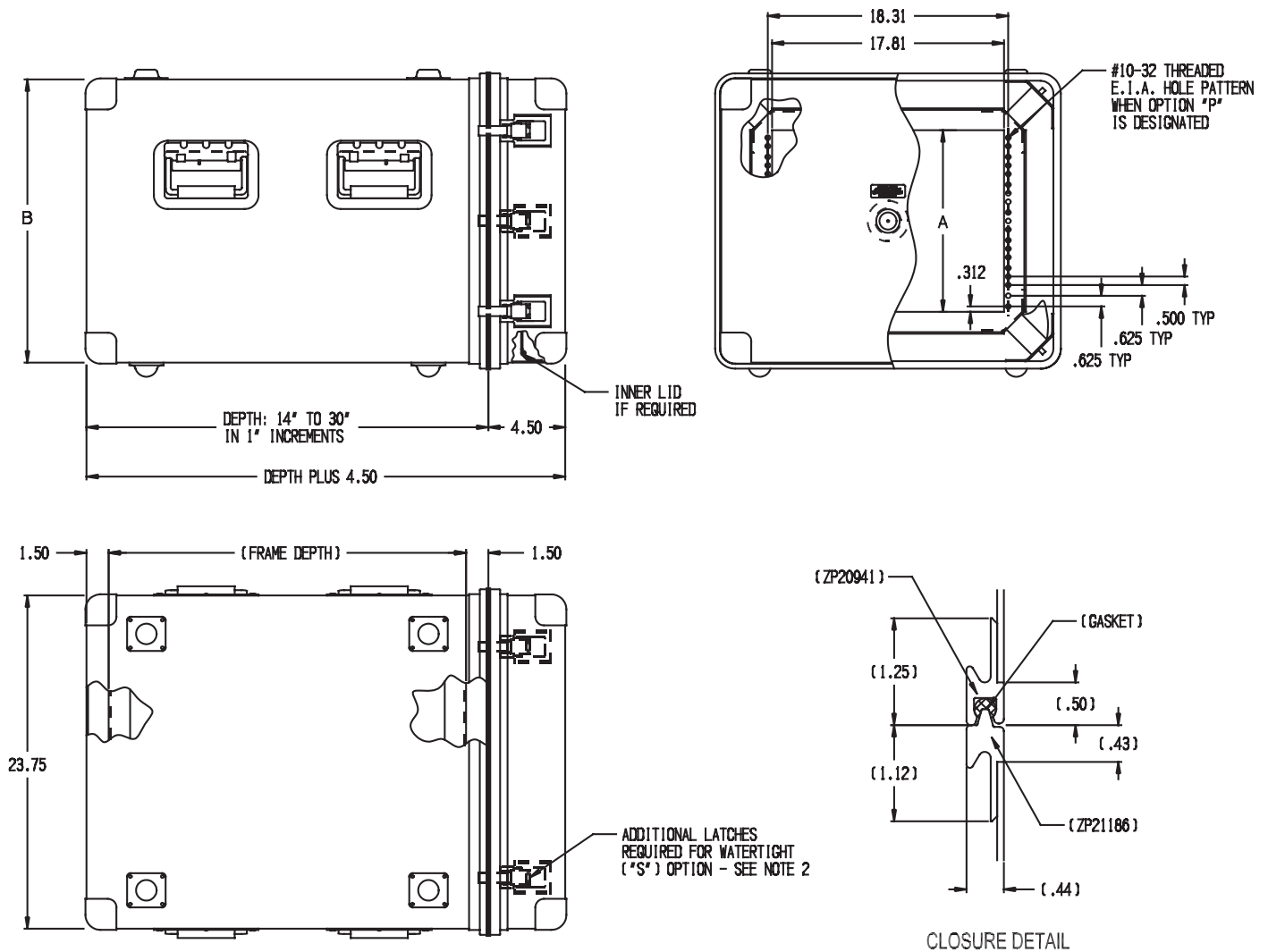
PANEL HEIGHT			
Dash No.	"A" Dim.	"U" Size	"B" Dim.
X	Special Size		
-7	7.00	(4U)	8.69
-8	8.75	(5U)	10.44
-10	10.50	(6U)	12.19
-14	14.00	(8U)	15.69
-17	17.50	(10U)	19.19
-21	21.00	(12U)	22.69
-24	24.50	(14U)	26.19
-28	28.00	(16U)	29.69

NOTES:

1. HANDLES:  
2 REQUIRED FOR DEPTHS OF 12 TO 18 INCHES.  
4 REQUIRED FOR DEPTHS OF 19 TO 36 INCHES.
2. ADDITIONAL SPRING LATCHES REQUIRED FOR WATERTIGHT ("S") OPTION.  
PANEL HEIGHT DASH NO. 7 THRU 17 ADD: 4 LATCHES (8 TOTAL)  
PANEL HEIGHT DASH NO. 21 THRU 28 ADD: 6 LATCHES (10 TOTAL)
3. ADDITIONAL "T" LATCHES REQUIRED FOR WATERTIGHT ("S") OPTION.  
PANEL HEIGHT DASH NO. 17 THRU 21 ADD: 2 LATCHES (6 TOTAL)  
PANEL HEIGHT DASH NO. 24 THRU 28 ADD: 4 LATCHES (8 TOTAL)



# VAL-AN 900 Series - Model 940



PANEL HEIGHT			
Dash No.	"A" Dim.	"U" Size	"B" Dim.
X	Special Size		
-5	5.37	(3U)	11.31
-7	7.12	(4U)	13.06
-8	8.87	(5U)	14.81
-10	10.62	(6U)	16.56
-14	14.12	(8U)	20.06
-17	17.62	(10U)	23.56
-21	21.12	(12U)	27.06
-24	24.62	(14U)	30.56
-28	28.12	(16U)	34.06

NOTES:

1. HANDLES:  
2 REQUIRED FOR DEPTHS OF 14 TO 20 INCHES.  
4 REQUIRED FOR DEPTHS OF 21 TO 30 INCHES.
2. ADDITIONAL LATCHES REQUIRED FOR WATERTIGHT ("S") OPTION.  
PANEL HEIGHT DASH NO. 5 THRU 17 ADD: 4 LATCHES (8 TOTAL)  
PANEL HEIGHT DASH NO. 21 THRU 28 ADD: 6 LATCHES (10 TOTAL)

PART NUMBER

940

1 = 20-49 LBS OF EQUIP.  
2 = 50-99 LBS OF EQUIP.  
3 = 100-150 LBS OF EQUIP.

E = EMI SHIELDED RACK  
N = NON-SHIELDED RACK

1 = NON-RECESSED HANDLE  
2 = RECESSED HANDLE

A = AUTOMATIC VALVE  
M = MANUAL RELIEF VALVE  
N = NOT REQUIRED

4 = NOT REQ'D  
5 = INNER LID FOR COVER

FINISH (see page 46)

DEPTH: (FRAME + 3.00")  
IN 1" INCREMENTS 14" MIN TO 30" MAX

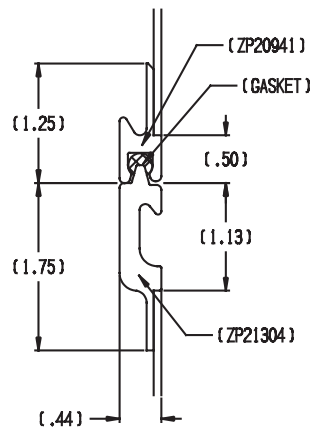
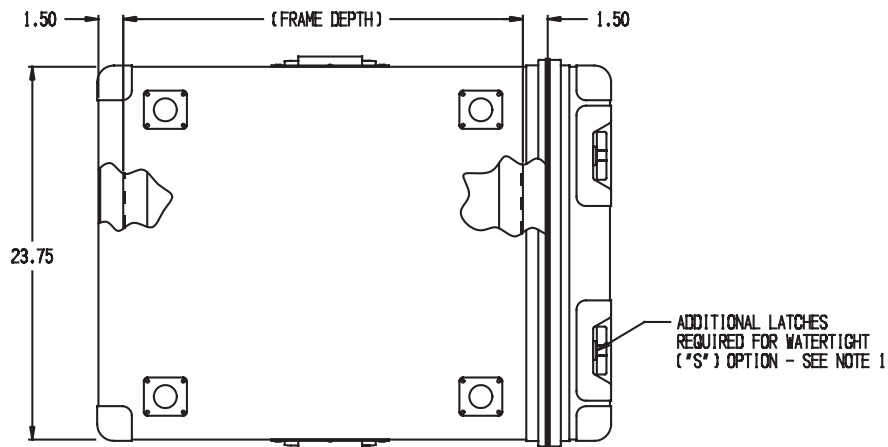
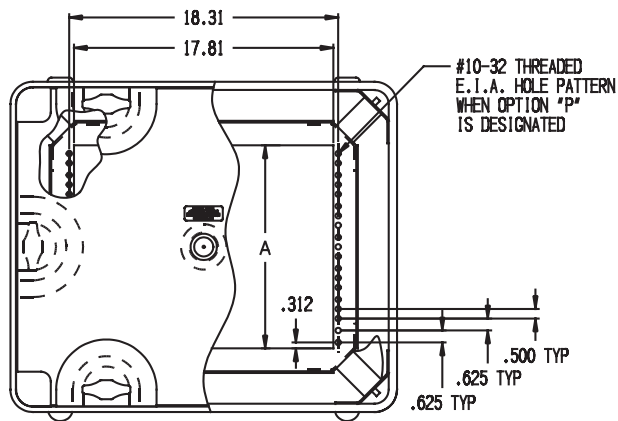
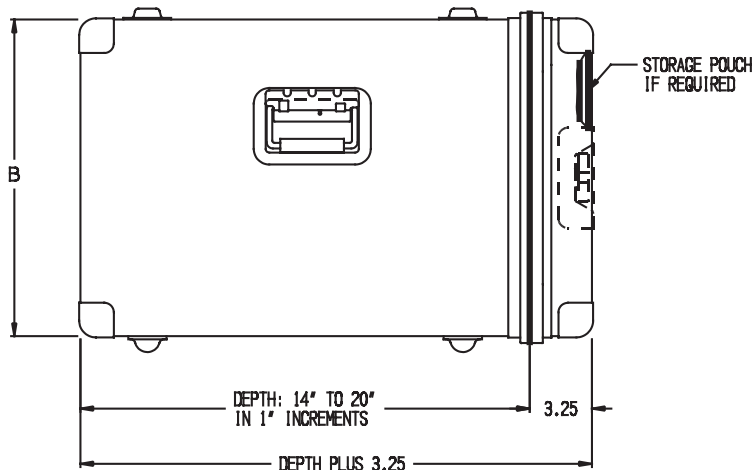
C = CUSTOMER  
P = STANDARD (E.I.A.)  
N = NOT REQ'D

PANEL HEIGHT

D = DRIP PROOF PER MIL-STD-108  
S = WATERTIGHT PER MIL-STD-108

CASE SERIES

# VAL-AN 900 Series - Model 945



### CLOSURE DETAIL

PART NUMBER

945 □ □ □ □ □ □ □ □ □ —

1 = 20-49 LBS OF EQUIP.  
2 = 50-99 LBS OF EQUIP.  
3 = 100-150 LBS OF EQUIP.

E = EMI SHIELDED RACK  
N = NON-SHIELDED RACK  
1 = NON-RECESSED HANDLE  
2 = RECESSED HANDLE

A = AUTOMATIC VALVE  
M = MANUAL RELIEF VALVE  
N = NOT REQUIRED

4 = NOT REQ'D  
5 = POUCH

FINISH (see page 46)

DEPTH: (FRAME + 3.00")  
IN 1" INCREMENTS \$ 14" MIN TO 20" MAX

C = CUSTOMER  
P = STANDARD (E.I.A.)  
N = NOT REQ'D

PANEL HEIGHT

D = DRIP PROOF PER MIL-STD-108  
S = WATERTIGHT PER MIL-STD-108

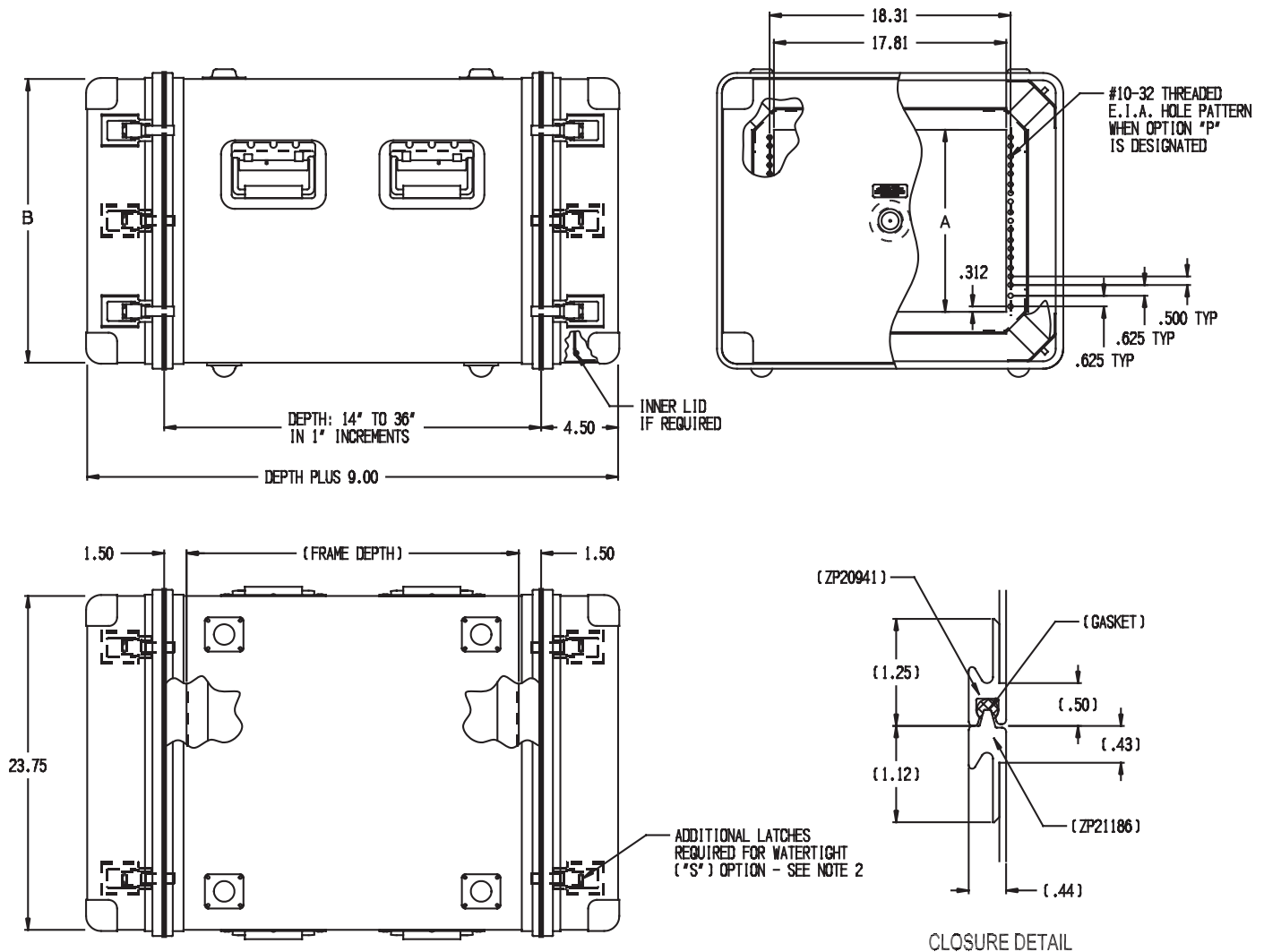
## CASE SERIES

PANEL HEIGHT			
Dash No.	"A" Dim.	"U" Size	"B" Dim.
X	Special Size		
-5	5.37	(3U)	11.31
-7	7.12	(4U)	13.06
-8	8.87	(5U)	14.81
-10	10.62	(6U)	16.56
-14	14.12	(8U)	20.06
-17	17.62	(10U)	23.56
-21	21.12	(12U)	27.06
-24	24.65	(14U)	30.56
-28	28.12	(16U)	34.06

NOTES:

1. ADDITIONAL LATCHES REQUIRED FOR WATERTIGHT ("S") OPTION.  
PANEL HEIGHT DASH NO. 14 THRU 17 ADD: 4 LATCHES (6 TOTAL)  
PANEL HEIGHT DASH NO. 21 THRU 28 ADD: 4 LATCHES (8 TOTAL)

# VAL-AN 900 Series - Model 950



PART NUMBER

950 □ □ □ □ □ □ □ □ □ □ -

1 = 20-49 LBS OF EQUIP.  
2 = 50-99 LBS OF EQUIP.  
3 = 100-150 LBS OF EQUIP.

E = EMI SHIELDED RACK  
N = NON-SHIELDED RACK  
1 = NON-RECESSED HANDLE  
2 = RECESSED HANDLE

A = AUTOMATIC VALVE  
M = MANUAL RELIEF VALVE  
N = NOT REQUIRED

4 = NOT REQ'D  
5 = INNER LID FRONT COVER  
6 = INNER LID REAR COVER  
7 = INNER LID BOTH COVERS

FINISH (see page 46)

DEPTH: (FRAME + 3.00")  
IN 1" INCREMENTS 14" MIN TO 36" MAX

C = CUSTOMER  
P = STANDARD (E.I.A.)  
N = NOT REQ'D

PANEL HEIGHT

D = DRIP PROOF PER MIL-STD-108  
S = WATERTIGHT PER MIL-STD-108

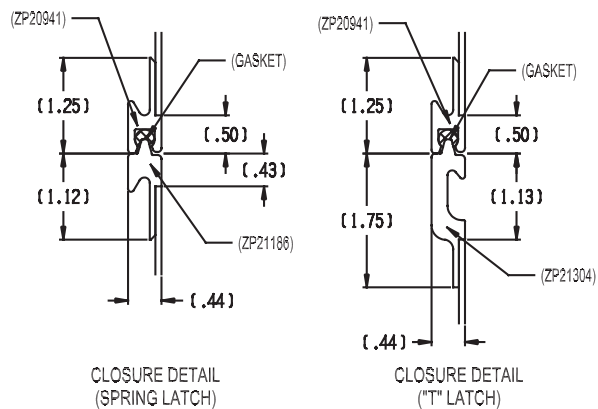
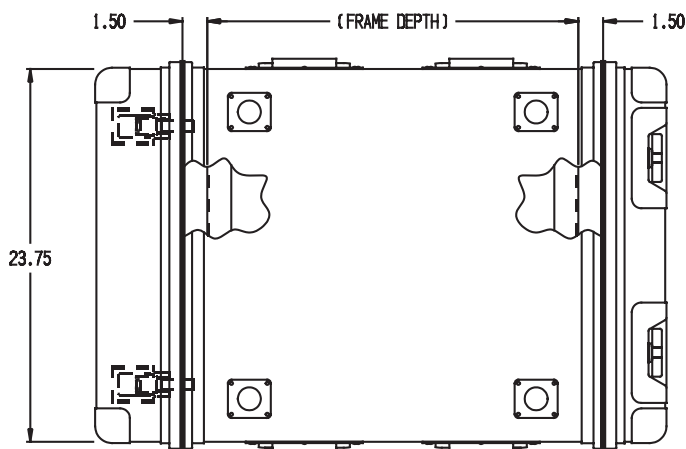
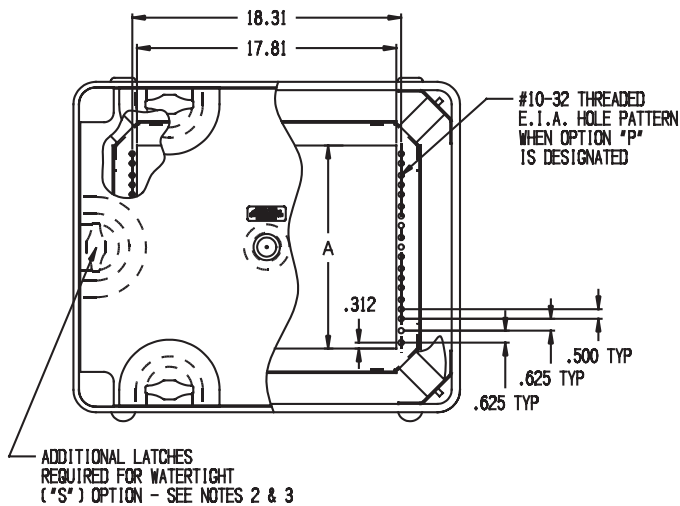
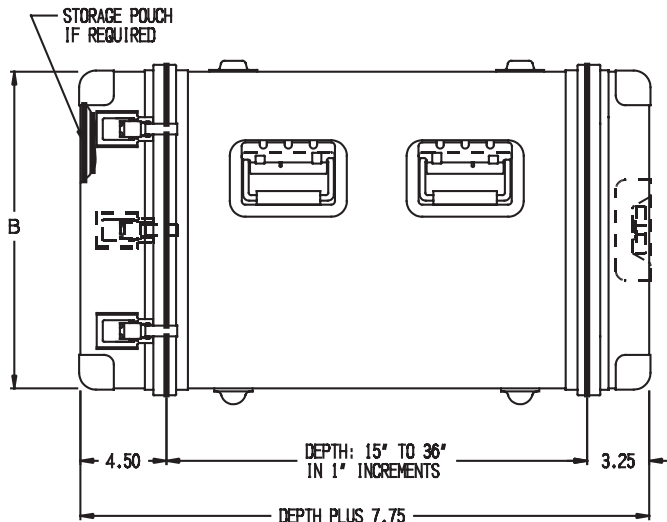
## CASE SERIES

PANEL HEIGHT			
Dash No.	"A" Dim.	"U" Size	"B" Dim.
X	Special Size		
-5	5.37	(3U)	11.31
-7	7.12	(4U)	13.06
-8	8.87	(5U)	14.81
-10	10.62	(6U)	16.56
-14	14.12	(8U)	20.06
-17	17.62	(10U)	23.56
-21	21.12	(12U)	27.06
-24	24.62	(14U)	30.56
-28	28.12	(16U)	34.06

NOTES:

1. HANDLES:  
2 REQUIRED FOR DEPTHS OF 14 TO 18 INCHES.  
4 REQUIRED FOR DEPTHS OF 19 TO 36 INCHES.
2. ADDITIONAL LATCHES REQUIRED FOR WATERTIGHT ("S") OPTION.  
PANEL HEIGHT DASH NO. 5 THRU 17 ADD: 8 LATCHES (16 TOTAL)  
PANEL HEIGHT DASH NO. 21 THRU 28 ADD: 12 LATCHES (20 TOTAL)

# VAL-AN 900 Series - Model 955



## PART NUMBER

955 □ □ □ □ □ □ □ □ □ □ —

1 = 20-49 LBS OF EQUIP.  
2 = 50-99 LBS OF EQUIP.  
3 = 100-150 LBS OF EQUIP.

B = BOTH COVERS "T" LATCH  
F = RECESSED "T" LATCH (REAR SPRING)

E = EMI SHIELDED RACK  
N = NON-SHIELDED RACK

1 = NON-RECESSED HANDLE  
2 = RECESSED HANDLE

A = AUTOMATIC VALVE  
M = MANUAL RELIEF VALVE  
N = NOT REQUIRED

4 = NOT REQ'D  
5 = POUCH (REAR COVER ONLY)

FINISH (see page 46)

DEPTH: (FRAME + 3.00")  
IN 1" INCREMENTS \$ 15" MIN TO 36" MAX

C = CUSTOMER  
P = STANDARD (E.I.A.)  
N = NOT REQ'D

PANEL HEIGHT

D = DRIP PROOF PER MIL-STD-108  
S = WATERTIGHT PER MIL-STD-108

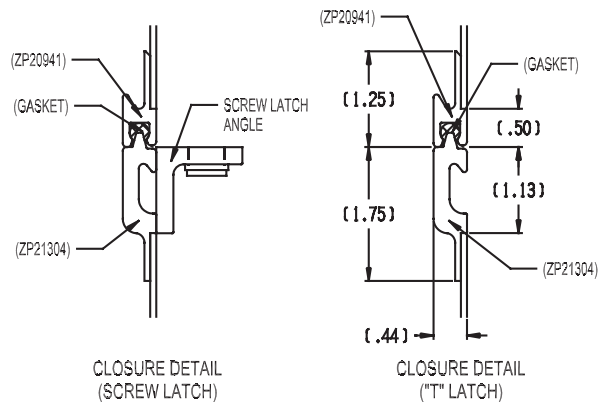
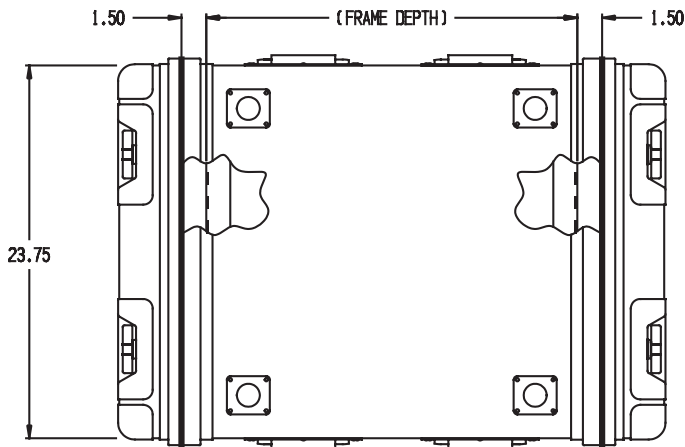
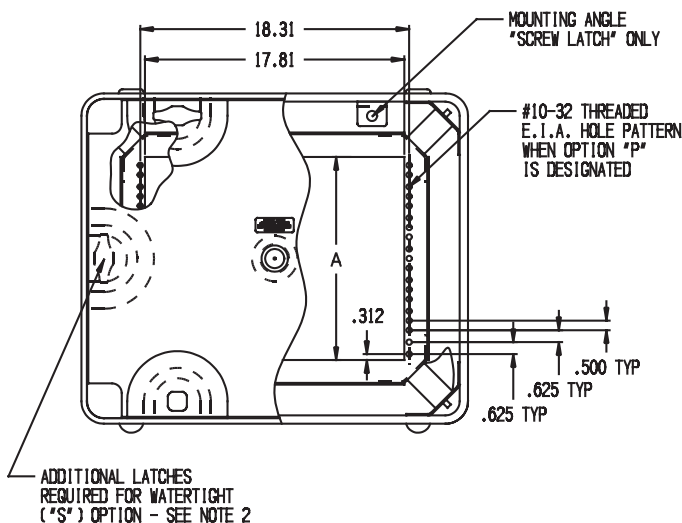
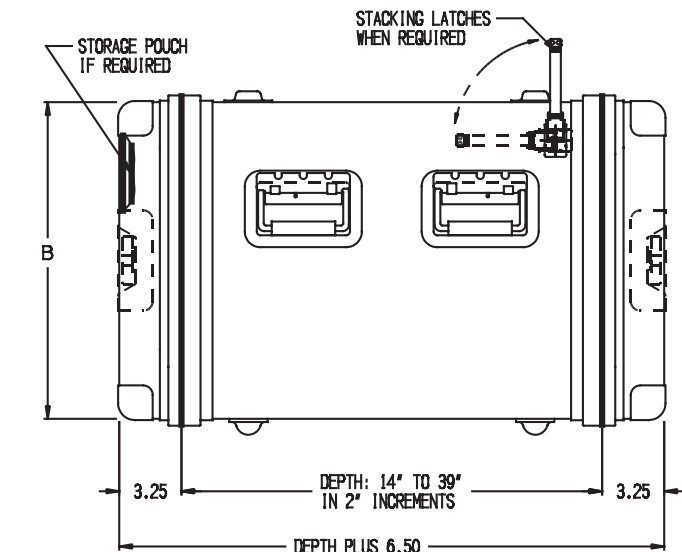
## CASE SERIES

PANEL HEIGHT			
Dash No.	"A" Dim.	"U" Size	"B" Dim.
X	Special Size		
-5	5.37	(3U)	11.31
-7	7.12	(4U)	13.06
-8	8.87	(5U)	14.81
-10	10.62	(6U)	16.56
-14	14.12	(8U)	20.06
-17	17.62	(10U)	23.56
-21	21.12	(12U)	27.06
-24	24.62	(14U)	30.56
-28	28.12	(16U)	34.06

NOTES:

1. HANDLES:  
2 REQUIRED FOR DEPTHS OF 15 TO 18 INCHES.  
4 REQUIRED FOR DEPTHS OF 19 TO 36 INCHES.
2. ADDITIONAL SPRING LATCHES REQUIRED FOR WATERTIGHT ("S") OPTION.  
PANEL HEIGHT DASH NO. 5 THRU 17 ADD: 4 LATCHES (8 TOTAL)  
PANEL HEIGHT DASH NO. 21 THRU 28 ADD: 6 LATCHES (10 TOTAL)
3. ADDITIONAL "T" LATCHES REQUIRED FOR WATERTIGHT ("S") OPTION.  
PANEL HEIGHT DASH NO. 14 THRU 17 ADD: 2 LATCHES (6 TOTAL)  
PANEL HEIGHT DASH NO. 21 THRU 28 ADD: 4 LATCHES (8 TOTAL)

# VAL-AN 900 Series - Model 960



## PART NUMBER

960 □ □ □ □ □ □ □ □ □ □ —

1 = 20-49 LBS OF EQUIP.  
2 = 50-99 LBS OF EQUIP.  
3 = 100-150 LBS OF EQUIP.

S = SCREW LATCH  
T = "T" LATCH

E = EMI SHIELDED RACK  
N = NON-SHIELDED RACK

1 = NON-RECESSED HANDLE  
2 = RECESSED HANDLE

A = AUTOMATIC VALVE  
M = MANUAL RELIEF VALVE  
N = NOT REQUIRED

4 = NOT REQ'D  
5 = POUCH (REAR COVER ONLY)

FINISH (see page 46)

DEPTH: (FRAME + 3.00")  
IN 1" INCREMENTS 14" MIN TO 39" MAX

C = CUSTOMER  
P = STANDARD (E.I.A.)  
N = NOT REQ'D

PANEL HEIGHT

D = DRIP PROOF PER MIL-STD-108  
S = WATERTIGHT PER MIL-STD-108

## CASE SERIES

PANEL HEIGHT			
Dash No.	"A" Dim.	"U" Size	"B" Dim.
X	Special Size		
-5	N/A	N/A	N/A
-7	7.12	(4U)	13.06
-8	8.87	(5U)	14.81
-10	10.62	(6U)	16.56
-14	14.12	(8U)	20.06
-17	17.62	(10U)	23.56
-21	21.12	(12U)	27.06
-24	24.62	(14U)	30.56
-28	28.12	(16U)	34.06

NOTES:

1. HANDLES:  
2 REQUIRED FOR DEPTHS OF 15 TO 18 INCHES.  
4 REQUIRED FOR DEPTHS OF 19 TO 39 INCHES.
2. ADDITIONAL "T" / SCREW LATCHES REQUIRED FOR WATERTIGHT ("S") OPTION.  
PANEL HEIGHT DASH NO. 14 THRU 17 ADD: 4 LATCHES (8 TOTAL)  
PANEL HEIGHT DASH NO. 21 THRU 28 ADD: 8 LATCHES (12 TOTAL)